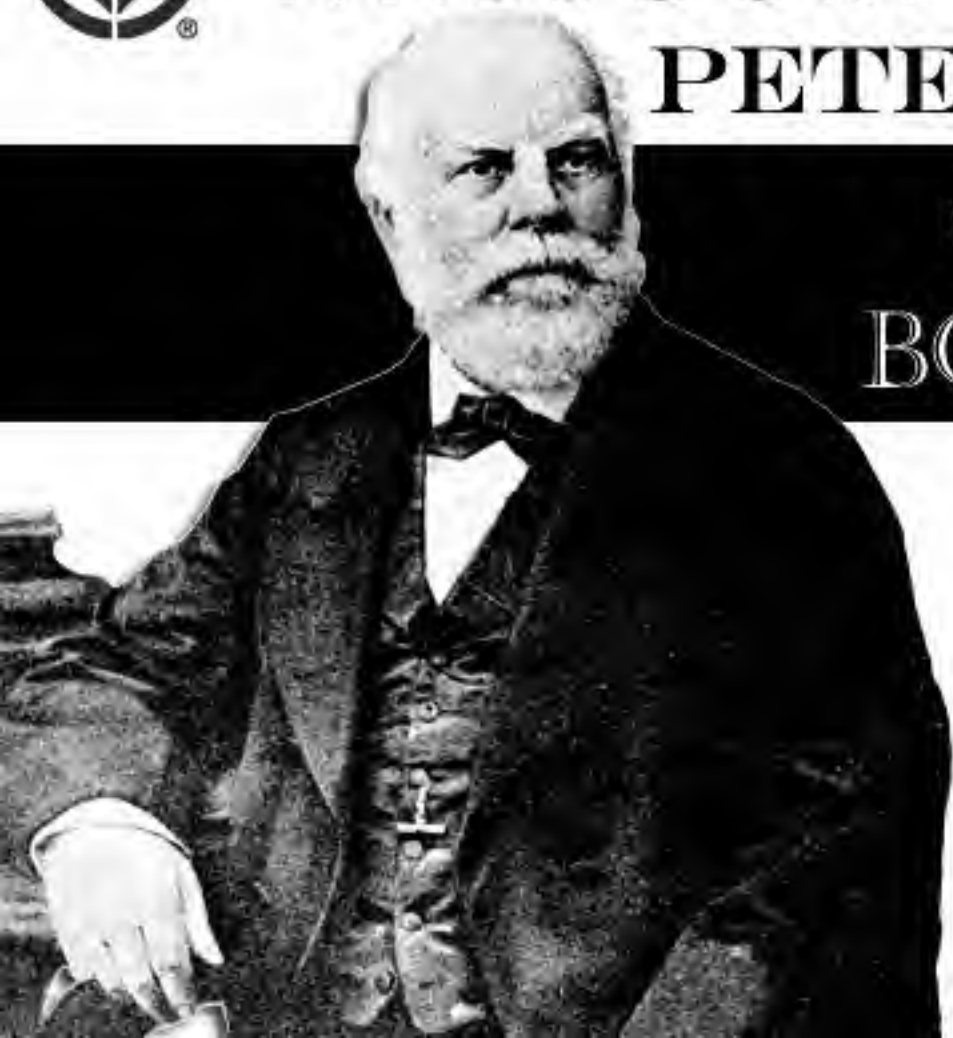




MISSOURI BOTANICAL GARDEN  
PETER H. RAVEN LIBRARY



GEORGE ENGELMANN  
BOTANICAL NOTEBOOKS

*Pagination Note:*

*Since many of the items lack a specific page number, the page number displayed online refers to the sequentially created number each item was given upon cataloging the materials.*

45

38-6

Euph. Bisteroana Salb  
 E. origanoides Bistero<sup>Spz.</sup>  
 E. Caciocorpa Kl ex parte  
 E. sordida Kl

= *pariflora*?

381-3



0 1 2 3 4 5 6 7 8 9 10

cm

copyright reserved



MISSOURI  
BOTANICAL  
GARDEN

6877

*Handwritten notes, possibly "St. Louis" and "Missouri Botanical Garden"*

MISSOURI BOTANICAL GARDEN  
GEORGE ENGELMANN PAPERS

*Handwritten notes, possibly "St. Louis"*



0 1 2 3 4 5 6 7 8 9 10

cm

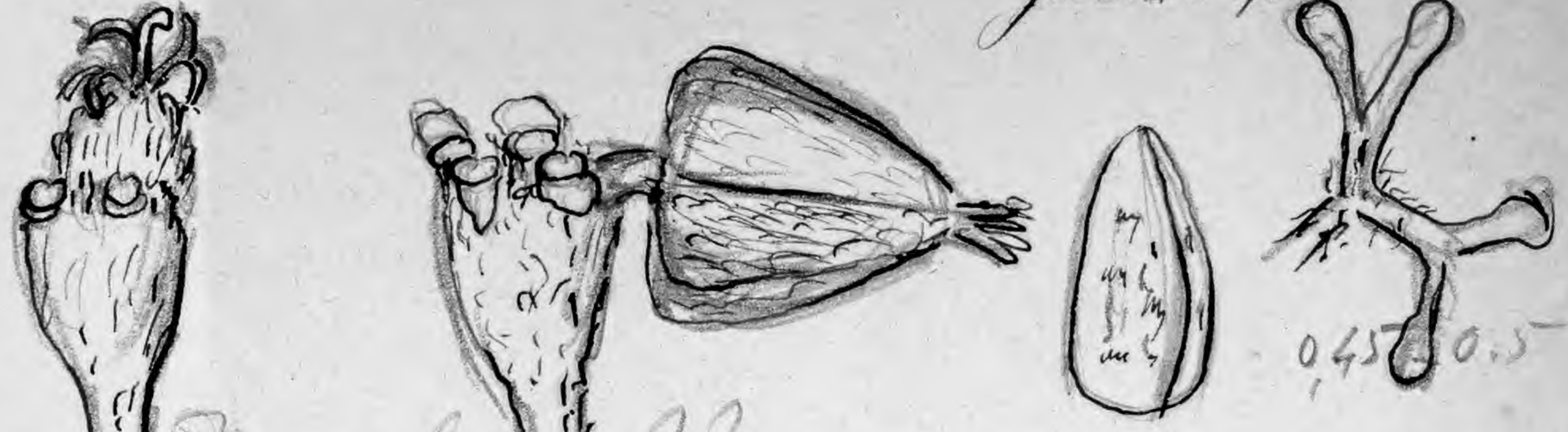
copyright reserved



MISSOURI  
BOTANICAL  
GARDEN

38.8

*L. Burtiana*  
Guadeloupe



*near* *Decumbens* ??

annua erecto patula, pubescens  
foliis ovato oblongis utraque obtusis  
basi <sup>maxime</sup> valde obliquis, dentato serratis  
stipulis subulatis pubescentibus  
anthodis in glomerulos terminales  
multifloros, capituliformes ~~congestis~~  
basi foliis duabus bracteiformibus  
fulcra congestis.

involucris obliquis pubescentibus, inter  
nudas; glandulis <sup>plus minus</sup> angustis appendiculatis  
~~subnudas~~ lobis ovatis pubescentibus superantibus  
stylis <sup>basi pubescentibus</sup> vulva nudis bifidis divaricatis  
s. erectis ovulis ovario raro  
sub breviori latius; - stigmatibus clavatis  
capsulis recurvis, breviter pedicellatis  
pyram. 9-10. aucto angulatis  
pubescentibus  
seminibus angustis acute  
angulatis leviter impresso-  
punctatis.



0 1 2 3 4 5 6 7 8 9 10  
cm copyright reserved



MISSOURI  
BOTANICAL  
GARDEN

MISSOURI BOTANICAL GARDEN  
 GEORGE ENGELMANN PAPERS

Pl. 4-8 inches high round  
 with short pubescence; younger  
 branches whitish. Leaves 6 or 7  
 l. long about 3 l. broad, very  
 oblong, (pubescent above) on both  
 sides;  
 glomerous 3 or 4 lines in  
 diameter; involucre 0.6 l.  
 capsule 0.7 l. long; seed sometimes  
 almost smooth, in other specimens  
 very distinctly pinnate (0.45-0.5  
 little less)  
 0.5 l. long or less.

A very distinct form, but perhaps  
 too near my *E. pycnanthemum*; which  
 perhaps must be ranged here! it is  
 distinguished by the more strictly erect growth,  
 perennial root, involucre heads;  
 and extensive pinnate strongly appressed  
~~seed~~ the same, leaves less serrate.  
 form of capsule distinct



0 1 2 3 4 5 6 7 8 9 10

cm

copyright reserved

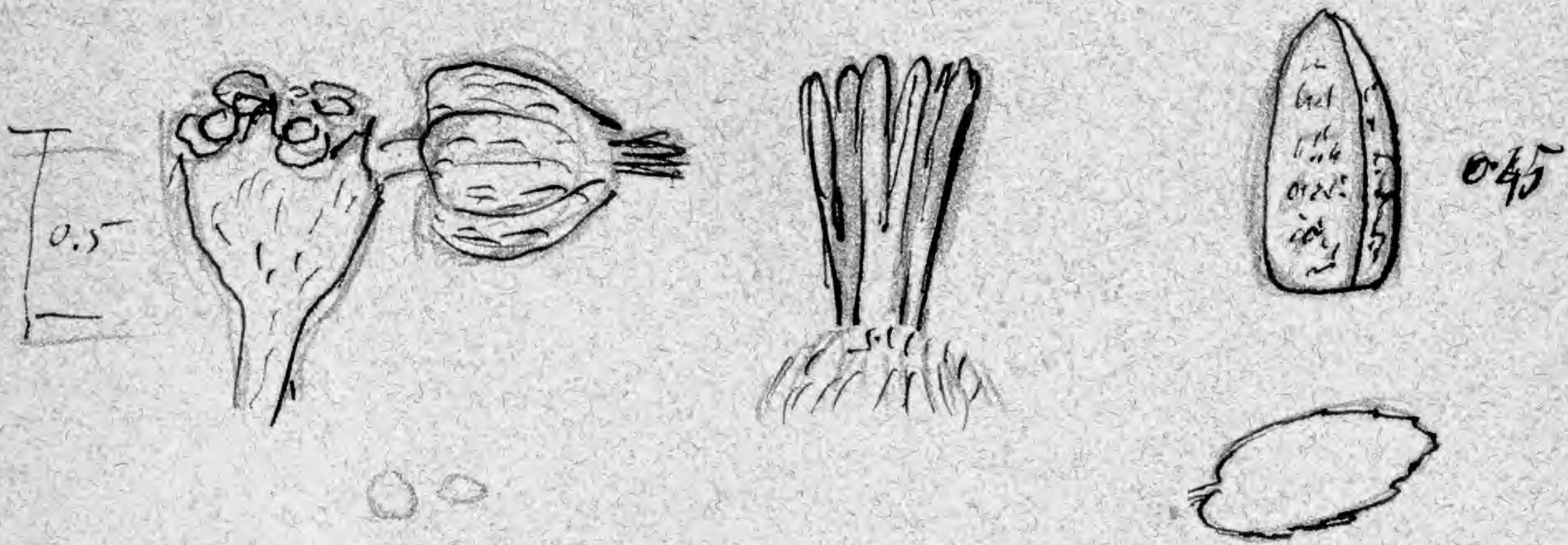


MISSOURI  
 BOTANICAL  
 GARDEN

38. 6

*Euph. lasiocarpa* Kluge  
Harti Ehrhony

non...



~~Cana~~ *Stemna* erecta ramis virgatis pubescentibus  
 foliis minoribus utrinque pubescentibus  
 confertis; serratis - crenatis, basi  
 cordatis, obtusiusculis;  
 stipulis lacunosolatis - pubescentibus  
 glomeratis ad ramulorum apices  
 densifloris;  
 involucri pubescentibus campanulatis  
 glandulis angustis appressulatis  
 2. subandris, stylis ovar  
 stylis erectis ad medium bifidis  
 ovario albo-tomentoso brevibus  
 Cap. pyriforme acute angulatis  
 pubescentibus  
 sem. angustis acute angulatis  
 foveis concavis undulatis  
 Leaves only 3-4 l. long;  
 plant 6" high - gray - seed

6879

pale red ~~gray~~ and very  
distinct from the seed of *E. hypericif.*

MISSOURI BOTANICAL GARDEN  
GEORGE ENGELMANN PAPERS

*[Faint, mostly illegible handwritten text, possibly bleed-through from the reverse side of the page.]*



0 1 2 3 4 5 6 7 8 9 10

cm

copyright reserved



MISSOURI  
BOTANICAL  
GARDEN

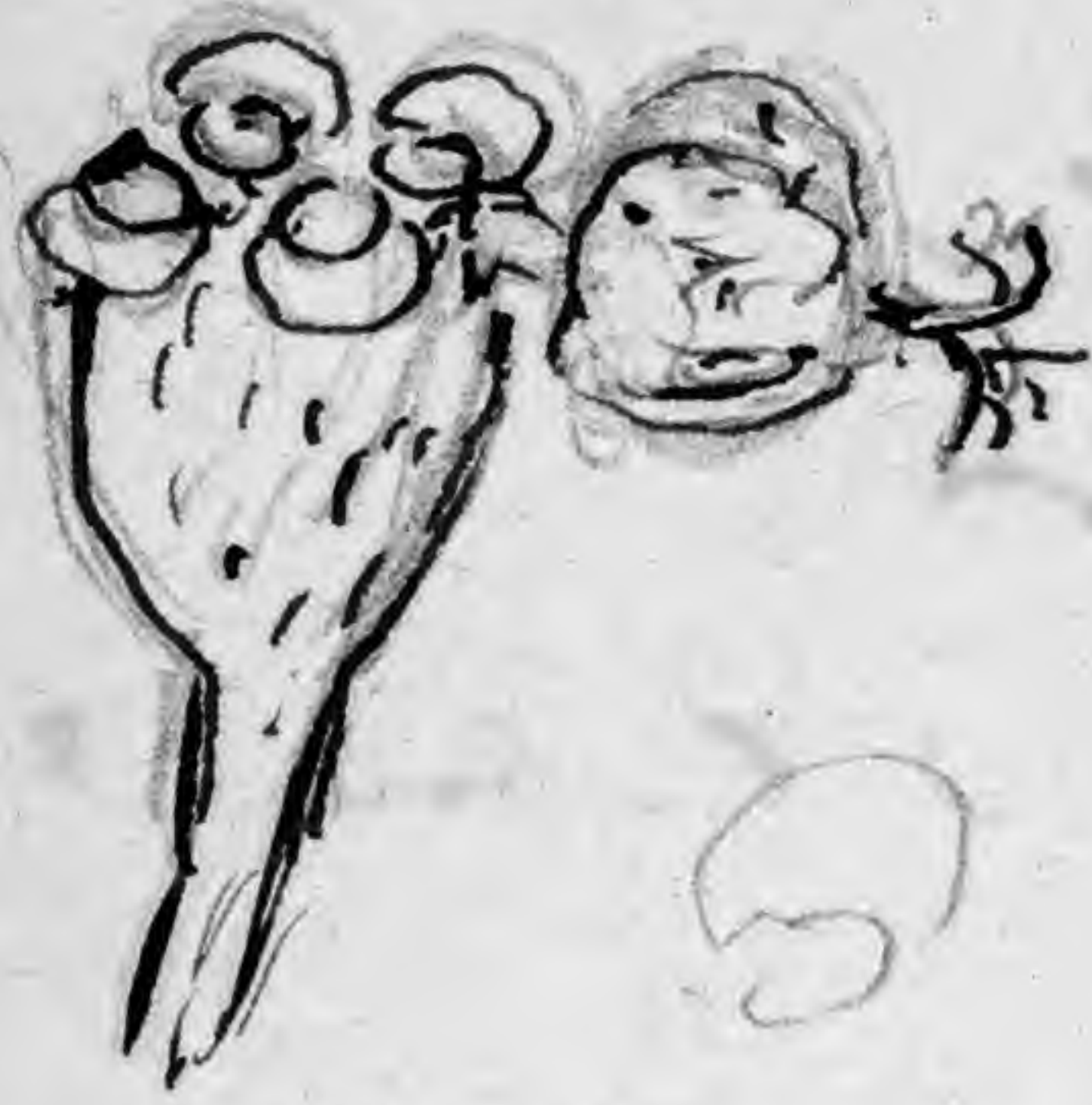
38.6 19.

*E. sordida* Klotz m

Mexico Archerborn

*E. (nodosa) Mackenz*

= *Antennaria*



0.5

Herb. erecta, patula, tota pubescens

fol. ovatis v. obovatis basi obliqua  
subcordatis obtusis crenatis

stipulis lanceolatis subulatis subdupl.  
trinerviis

glomerulis <sup>multifloris</sup> ~~capis~~ (compositis) umbellatis

formantibus ad apicem ramulorum

terminalibus aphyllis

invol. longis pedicellatis

appendicibus orbiculatis albis

stylis basi cuneatis <sup>erectis</sup> v. obovatis aequilatis

rami filiformes recurvis

caps. pubescentibus

sem. 0.5 li. longis angustis subellipticis

acutis angulatis transversis rugosis

Similar to a small *Hypericum* fl.

but well distinguished — *Hypericum*

many flowered; lax, but very small

long pedicellated; branched, with the



0 1 2 3 4 5 6 7 8 9 10

cm

copyright reserved



MISSOURI  
BOTANICAL  
GARDEN



petrified dendrocyathus with leaves  
& nodose basal thallosis, and look  
Gms 1-6 l. diameter  
leaves 3-5 l. by 2-3 l. broad

MISSOURI BOTANICAL GARDEN  
GEORGE ENGELMANN PAPERS

*[Faint, mostly illegible handwritten text, likely bleed-through from the reverse side of the page.]*



0 1 2 3 4 5 6 7 8 9 10

cm

copyright reserved



MISSOURI  
BOTANICAL  
GARDEN

46

37

Capitellate

Sonora

384-5



0 1 2 3 4 5 6 7 8 9 10

cm

copyright reserved



MISSOURI  
BOTANICAL  
GARDEN

6881

MISSOURI BOTANICAL GARDEN  
GEORGE ENGELMANN PAPERS



0 1 2 3 4 5 6 7 8 9 10

cm

copyright reserved



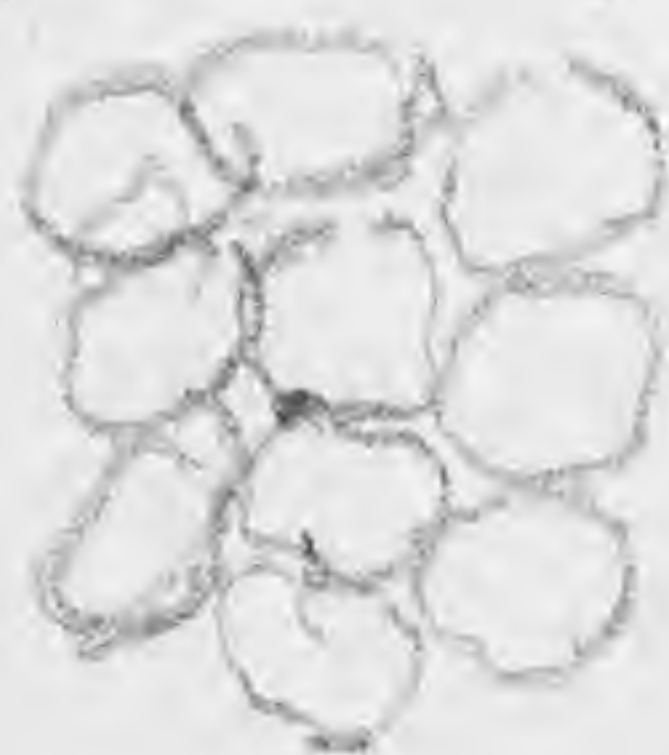
MISSOURI  
BOTANICAL  
GARDEN

359 Euph. capitellata Eng. June 27 1874  
D. B. D.

Seed Dr. Smart, Tucson, Arizona Aug 4 1874

cells of surface

x 10



x 150

inflor. cylindrica, subcapitata  
stipulae stipitatae

stipulae

seed with 3 or 4

cross ribs undulated

seed sharp angled

1-1.2 mm long, scarcely half  
as wide



anther glabrous

campanulate, bilobed

pubescent - as above

appressed transverse alba



caulis breviter puberulus

folia glauca brevissima puberula

lanceolata petiolata (3-6 or 7 l. long)

oblonga - lanceolata, continuae

marginata vel saepe margine superiore

perreturis pinnatis acutis armata

stipulae majores subulatae

interea 2, fissae, longe exsertatae



0 1 2 3 4 5 6 7 8 9 10

cm

copyright reserved



MISSOURI  
BOTANICAL  
GARDEN

6882

Wirth & Corlies

DRUGGISTS

South-west  
Corner Fifth  
and Market  
Streets

MISSOURI BOTANICAL GARDEN  
GEORGE ENGELMANN PAPERS



0 1 2 3 4 5 6 7 8 9 10

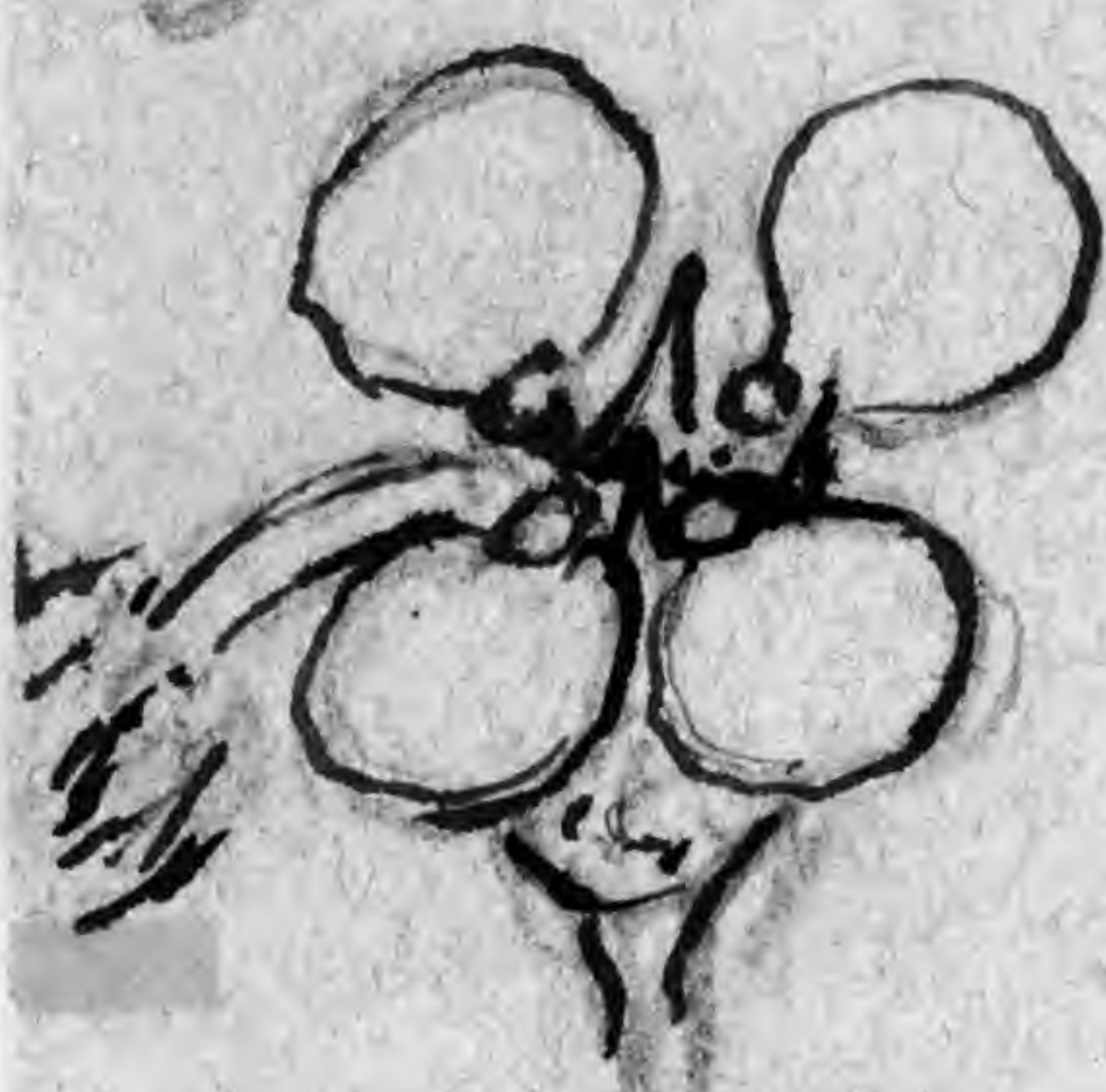
cm

copyright reserved

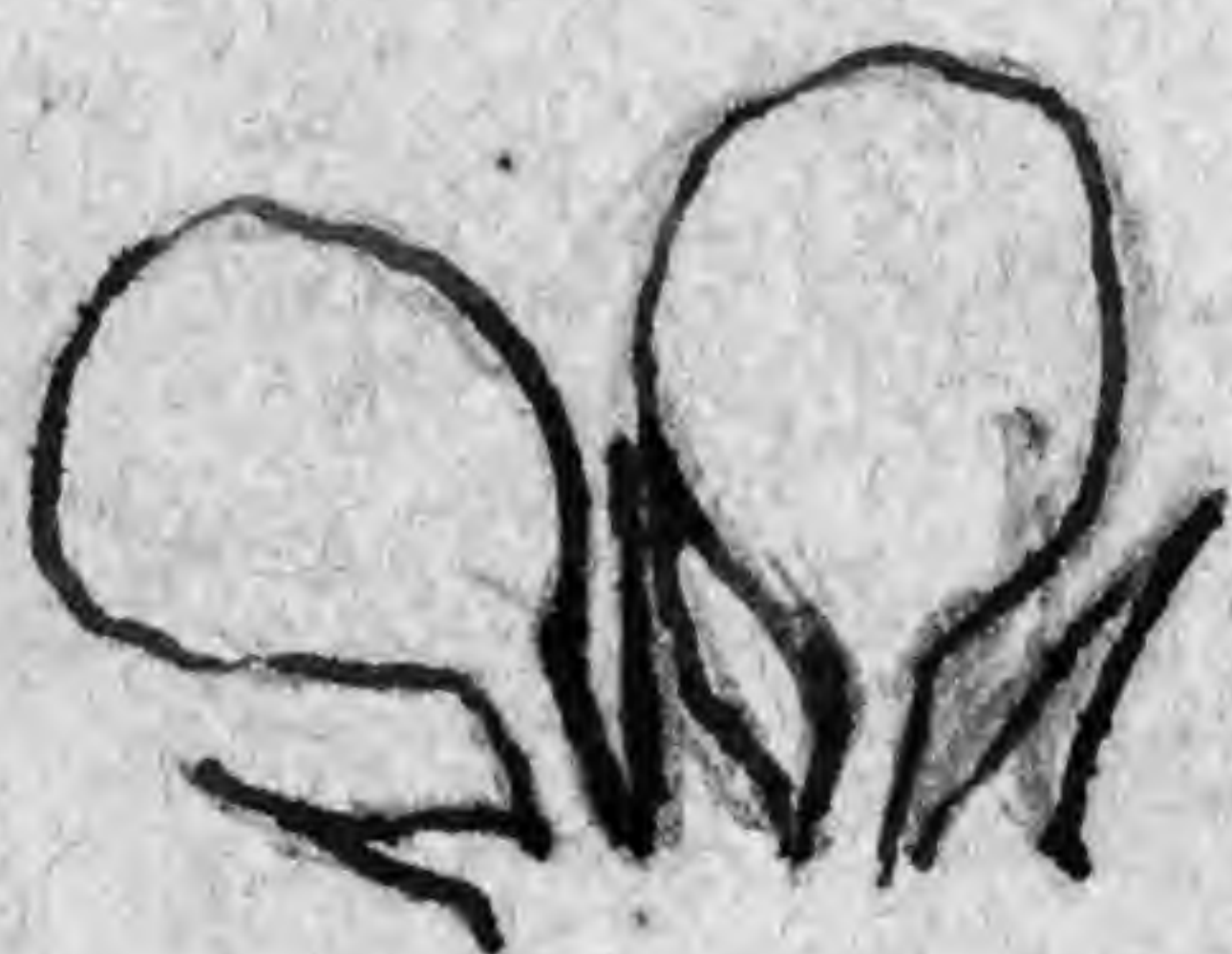


MISSOURI  
BOTANICAL  
GARDEN

37. *Capitellata* Wright 1849



0.5



back view



slight hood  
interior view

caulis diffusus, puberulis  
 foliis, e basi, valde  
 obliqua oblongo-linearibus  
 nudis, s. parce punctatis  
 mucronatis argute serrulatis  
 densifloris subnatis  
 glomeratis terminalibus  
 densifloris (s. lateralibus)  
 invol. opp. longius duplatis  
 app. peltatis ovatis, orbatis  
 integris magis lobis  
 stylis ovum hinc longioribus



0 1 2 3 4 5 6 7 8 9 10

cm

copyright reserved

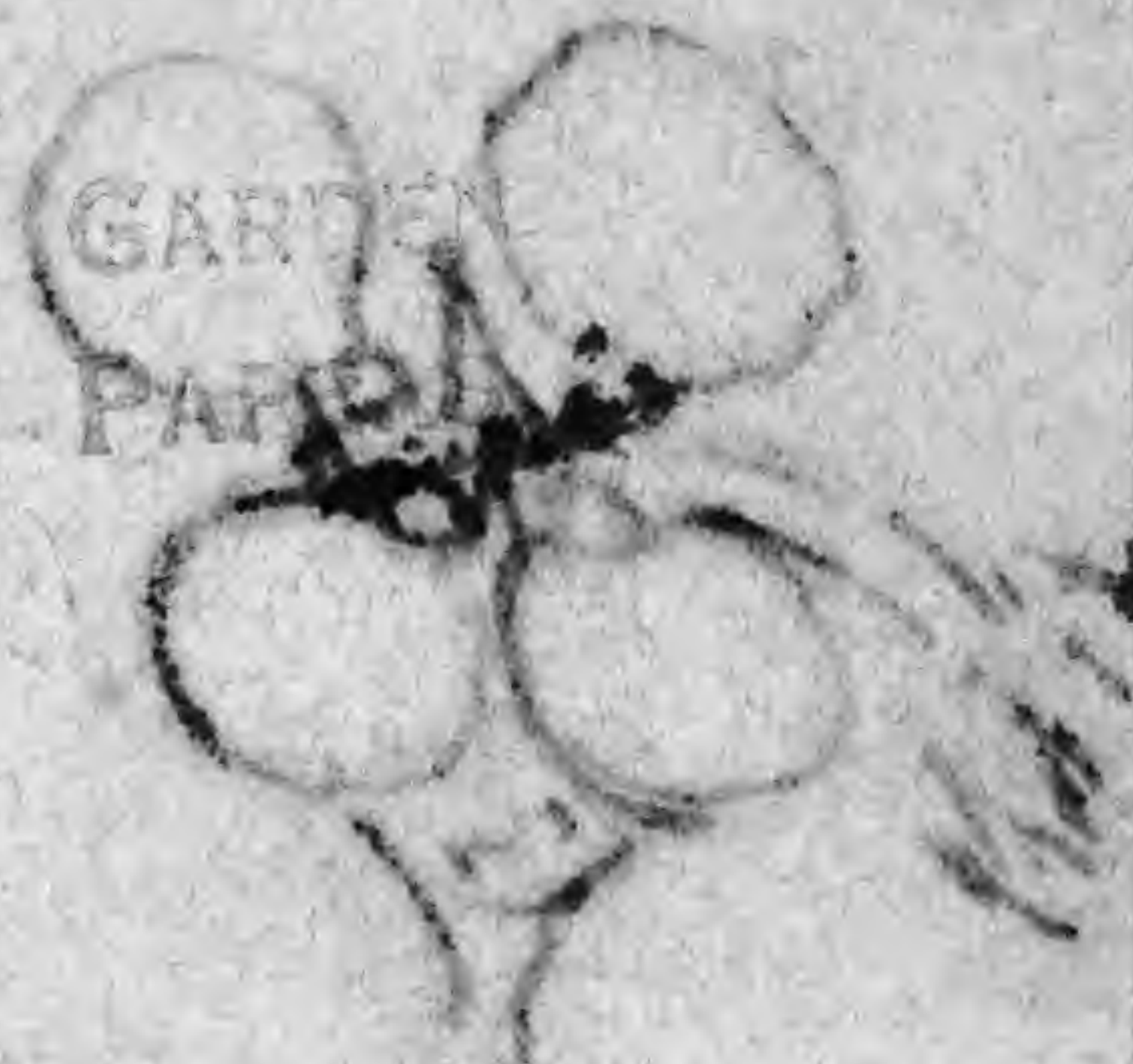


MISSOURI  
 BOTANICAL  
 GARDEN

6883 SC



MISSOURI BOTANICAL GARDEN  
GEORGE ENGELMANN PAPERS



*Filifera*  
and *bifida*  
caps puberula; sem.  
ovate, acutata, acute  
& angulata, rugoso-  
tuberculosa

See in pt 7 of Engelm. Bot. Bot.  
1844 by [unclear] on [unclear]



0 1 2 3 4 5 6 7 8 9 10

cm

copyright reserved



MISSOURI  
BOTANICAL  
GARDEN

47

38

pycnanthum

(Collipin)

380



0 1 2 3 4 5 6 7 8 9 10

cm

copyright reserved



MISSOURI  
BOTANICAL  
GARDEN



6884

MISSOURI BOTANICAL GARDEN  
GEORGE ENGELMANN PAPERS



0 1 2 3 4 5 6 7 8 9 10

cm

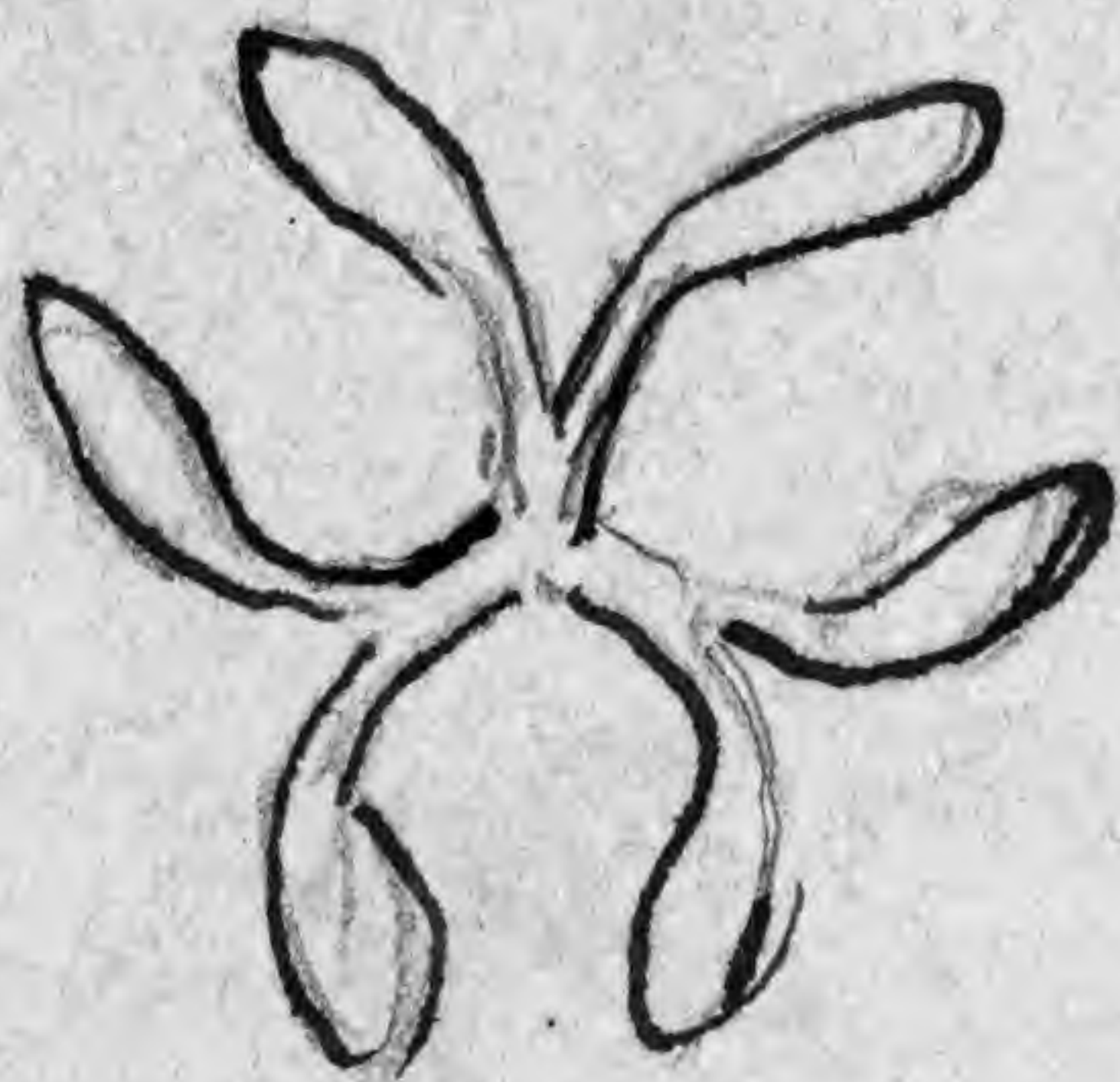
copyright reserved



MISSOURI  
BOTANICAL  
GARDEN

58

*pycnanthema* Engel 186



0,5

perennis. caulis prostratus inanis

pubescens

foliis ciliatis lanceolatis oblongo-

cordatis ovatis obtusis

antrorsis, basi saepe

unimontatis induratis

dentibus parvis ad

latas inferias serratis

<sup>Siberia</sup> stip. lanceolatis subulatis

paucis

caulis apice ramoso glomeratis

glomeratis multifloris

terminalibus

glomeratis ~~pubescentibus~~ <sup>pubescentibus</sup>

invol. <sup>exteriori</sup> ~~exteriori~~ <sup>interiori</sup> ~~interiori~~ lobis orbiculatis

app. ~~exteriori~~ <sup>interiori</sup> lobis



0 1 2 3 4 5 6 7 8 9 10

cm

copyright reserved



MISSOURI  
BOTANICAL  
GARDEN



*Arbutus*  
 stylis fere d. brevifloris  
 petalis 5. stig. brevibus  
 clavellatis

*Leptocarpus myrtilloides* Hooker  
 sem 0.5 ante angul.  
 trunc. rugulosis punctatis  
 etc

MISSOURI BOTANICAL GARDEN  
 GEORGE ENGELMANN PAPERS

*Handwritten signature or name*



0 1 2 3 4 5 6 7 8 9 10  
 cm copyright reserved



MISSOURI  
 BOTANICAL  
 GARDEN